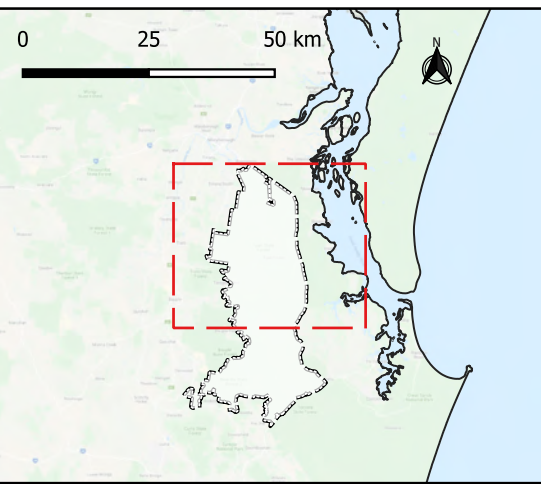


Layout
Fraser Coast Regional Council Area

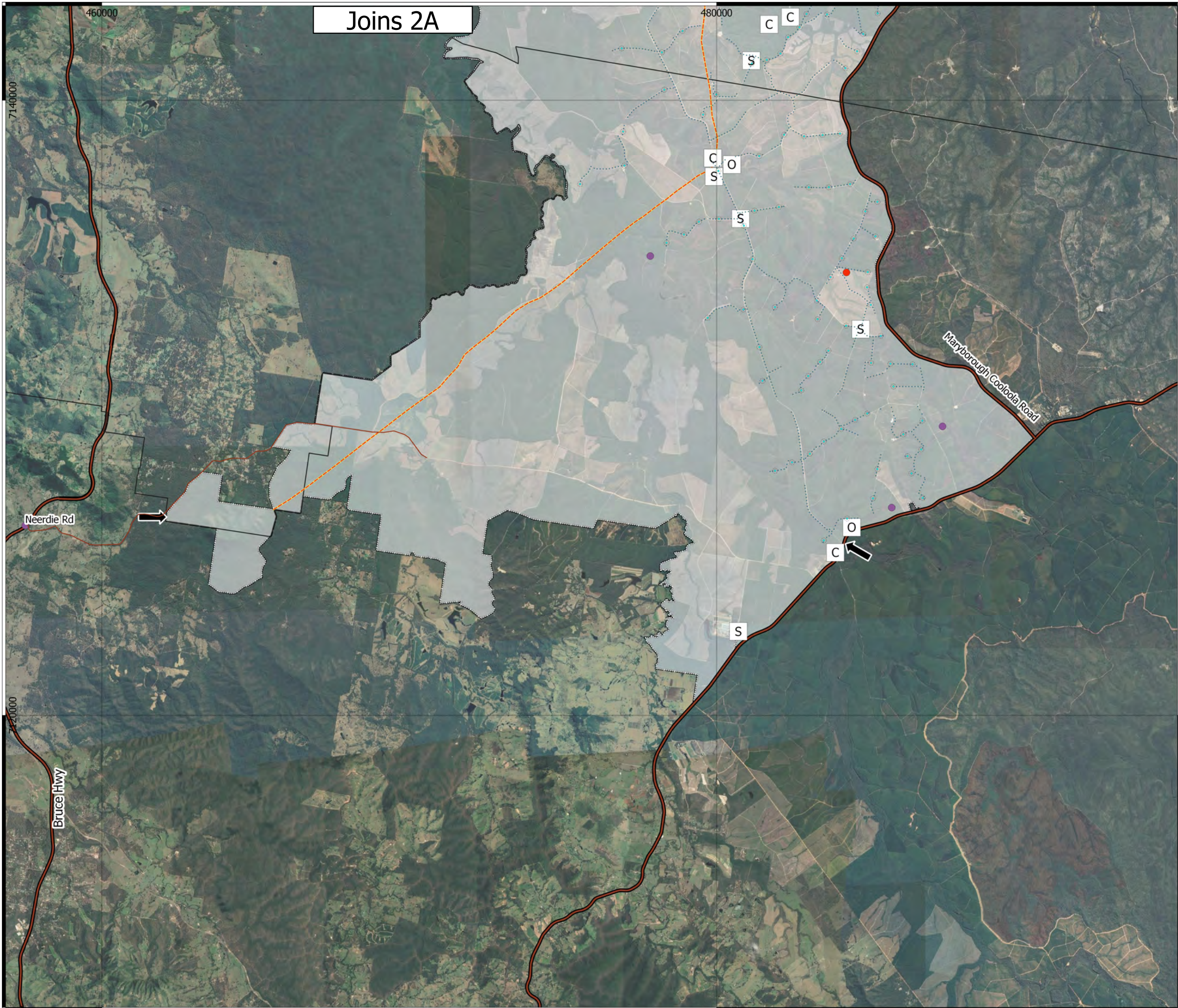
- Legend**
- Nominal Wind Turbine Locations
 - Alternative Wind Turbine Locations
 - Temporary Meteorological Mast
 - Permanent Meteorological Mast
 - Forest Wind Project Area
 - Council Boundary
 - Overhead Transmission Corridor (within Project Area Boundary)
 - State-controlled Road
 - Site Entry
 - Nominal Operations Compound
 - Nominal Construction Compound
 - Nominal Substation



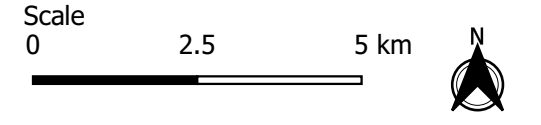
Information contained on this figure is the copyright of Forest Wind Holdings Pty Ltd. 2019. Unauthorised use or reproduction of this figure either wholly or in part without written permission infringes copyright. © Forest Wind Holdings Pty Ltd. 2019.

Cadastral Data (DCDB) © State of Queensland (Department of Natural Resources and Mines) 2019. Contours © Department of Natural Resources and Mines, 2019.

Based on or contains data provided by the State of Queensland (Department of Natural Resources and Mines) 2019, CleanSight Pty Ltd and Forest Wind Holdings Pty Ltd. 2019 (the "Provider"). In consideration of the Provider's permitting use of this data you acknowledge and agree that the Provider gives no warranty in relation to the data (including accuracy, reliability, completeness, currency or suitability) and accepts no liability (including without limitation liability in negligence) for any loss, damage or costs (including consequential damage) relating to any use of the data. Data must not be used for direct marketing or be used in breach of the privacy laws.



Joins 2A

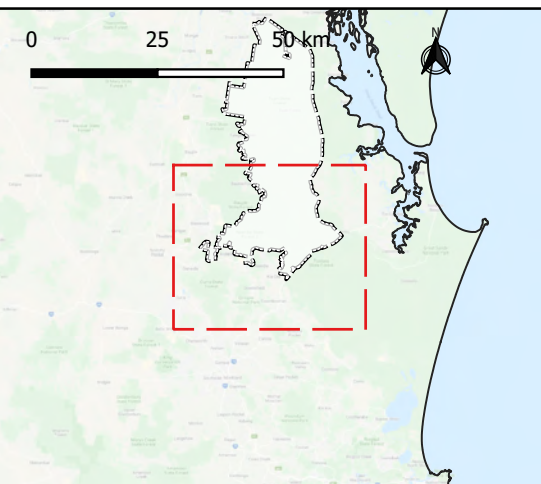


1:115,000 on A3
Created by: CleanSight Pty Ltd
Last modified: 16 December 2019
Version: DWG051_L-4.1_Figure 2B
Layout

FIGURE 2B

Layout
Gympie Regional Council Area

- Legend**
- Nominal Wind Turbine Locations
 - Alternative Wind Turbine Locations
 - Temporary Meteorological Mast
 - Permanent Meteorological Mast
 - Forest Wind Project Area
 - Council Boundary
 - Overhead Transmission Corridor (within Project Area Boundary)
 - State-controlled Road
 - Site Entry
 - Nominal Operations Compound
 - Nominal Construction Compound
 - Nominal Substation



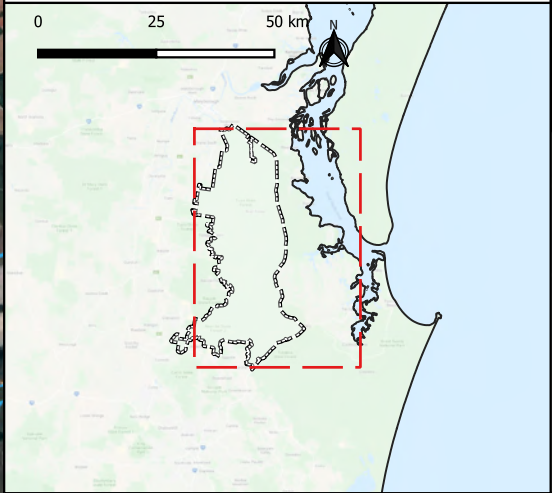
Information contained on this figure is the copyright of Forest Wind Holdings Pty Ltd. 2019. Unauthorised use or reproduction of this figure either wholly or in part without written permission infringes copyright. © Forest Wind Holdings Pty Ltd. 2019.

Cadastral Data (DCDB) © State of Queensland (Department of Natural Resources and Mines) 2019. Contours © Department of Natural Resources and Mines, 2019.

Based on or contains data provided by the State of Queensland (Department of Natural Resources and Mines) 2019, CleanSight Pty Ltd and Forest Wind Holdings Pty Ltd. 2019 (the "Provider"). In consideration of the Provider's permitting use of this data you acknowledge and agree that the Provider gives no warranty in relation to the data (including accuracy, reliability, completeness, currency or suitability) and accepts no liability (including without limitation liability in negligence) for any loss, damage or costs (including consequential damage) relating to any use of the data. Data must not be used for direct marketing or be used in breach of the privacy laws.

Separation Distance

- Legend**
- Nominal Wind Turbine Locations
 - Alternative Wind Turbine Locations
 - Sensitive Land Use (within 3.5km of Nearest Wind Turbine)
 - Forest Wind Project Area
 - Lot Plan Boundary
 - 1.5 km Buffer
 - State-controlled Road

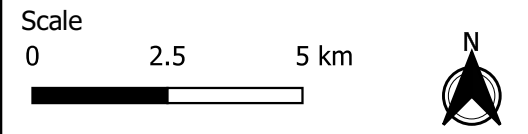


Information contained on this figure is the copyright of CleanSight Pty. Ltd. Unauthorised use or reproduction of this figure either wholly or in part without written permission infringes copyright. © CleanSight Pty. Ltd. 2019.

Cadastral Data (DCDB) © State of Queensland (Department of Natural Resources and Mines) 2019. Contours © Department of Natural Resources and Mines, 2019.

Based on or contains data provided by the State of Queensland (Department of Natural Resources and Mines) 2019 and CleanSight Pty Ltd (the "Provider"). In consideration of the Provider's permitting use of this data you acknowledge and agree that the Provider gives no warranty in relation to the data (including accuracy, reliability, completeness, currency or suitability) and accepts no liability (including without limitation liability in negligence) for any loss, damage or costs (including consequential damage) relating to any use of the data. Data must not be used for direct marketing or be used in breach of the privacy laws.





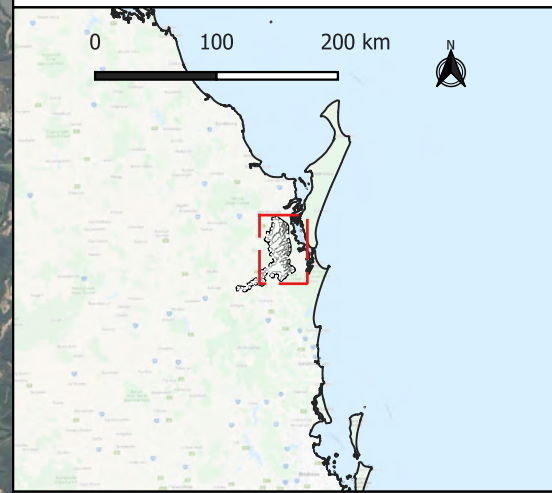
1:140,000 on A3
Created by: CleanSight Pty Ltd
Last modified: 16 December, 2019
Version: DWG053_P-4.1_Figure 4
Native Title Claim Boundary

FIGURE 4

Native Title Claim Boundary

Legend

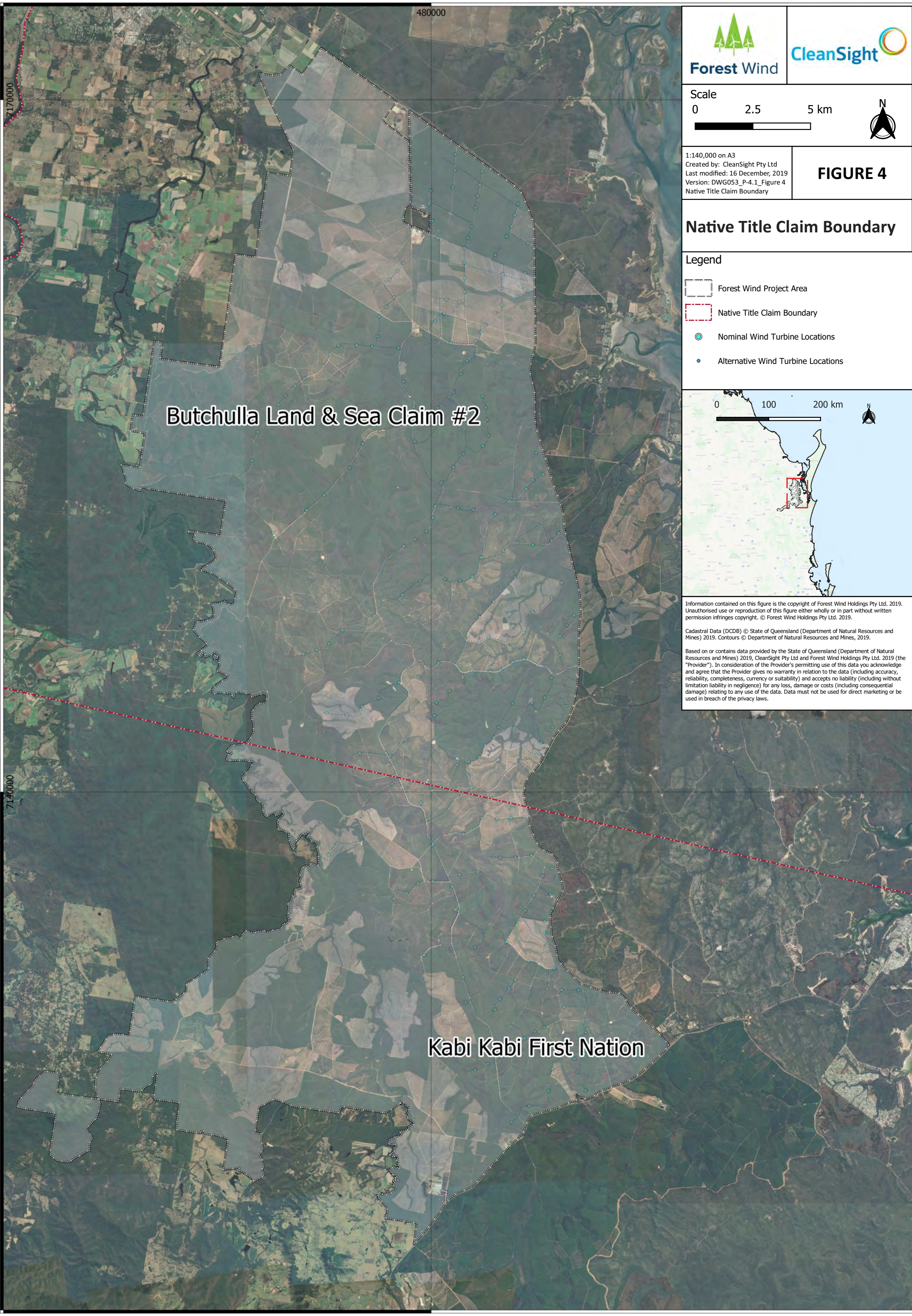
- Forest Wind Project Area
- Native Title Claim Boundary
- Nominal Wind Turbine Locations
- Alternative Wind Turbine Locations



Information contained on this figure is the copyright of Forest Wind Holdings Pty Ltd. 2019. Unauthorised use or reproduction of this figure either wholly or in part without written permission infringes copyright. © Forest Wind Holdings Pty Ltd. 2019.

Cadastral Data (DCDB) © State of Queensland (Department of Natural Resources and Mines) 2019. Contours © Department of Natural Resources and Mines, 2019.

Based on or contains data provided by the State of Queensland (Department of Natural Resources and Mines) 2019, CleanSight Pty Ltd and Forest Wind Holdings Pty Ltd. 2019 (the "Provider"). In consideration of the Provider's permitting use of this data you acknowledge and agree that the Provider gives no warranty in relation to the data (including accuracy, reliability, completeness, currency or suitability) and accepts no liability (including without limitation liability in negligence) for any loss, damage or costs (including consequential damage) relating to any use of the data. Data must not be used for direct marketing or be used in breach of the privacy laws.



Butchulla Land & Sea Claim #2

Kabi Kabi First Nation