

- Legend**
- Potential Culvert
 - ▭ Bridge Upgrade
 - Watercourse Identification Map
 - - - All routes (heavy vehicle routes)
 - ▭ Corridors
 - ▭ Additional vehicle route or potential powerline (to Laminex Factory)
 - ▭ Additional vehicle route or potential powerline (Maryborough Cooloola Rd)
 - ▭ MSES - Regulated vegetation 100m from wetland
 - ▭ Vegetation management wetlands map (v2.43)
 - ▭ Potential trigger - MSES regulation vegetation 100m wetland buffer
 - ▭ Potential trigger - VM wetlands

Premise
ENVIRONMENT

SUNSHINE COAST
8 Grebe Street
Peregian Beach, QLD, 4566
t (07) 5448 3288
premise.com.au

0 1 2 3 4 5
Kilometers

1:165,000 at A3

Map Projection: Transverse Mercator
Horizontal Datum: GDA 1994
Grid: GDA 1994 MGA Zone 56

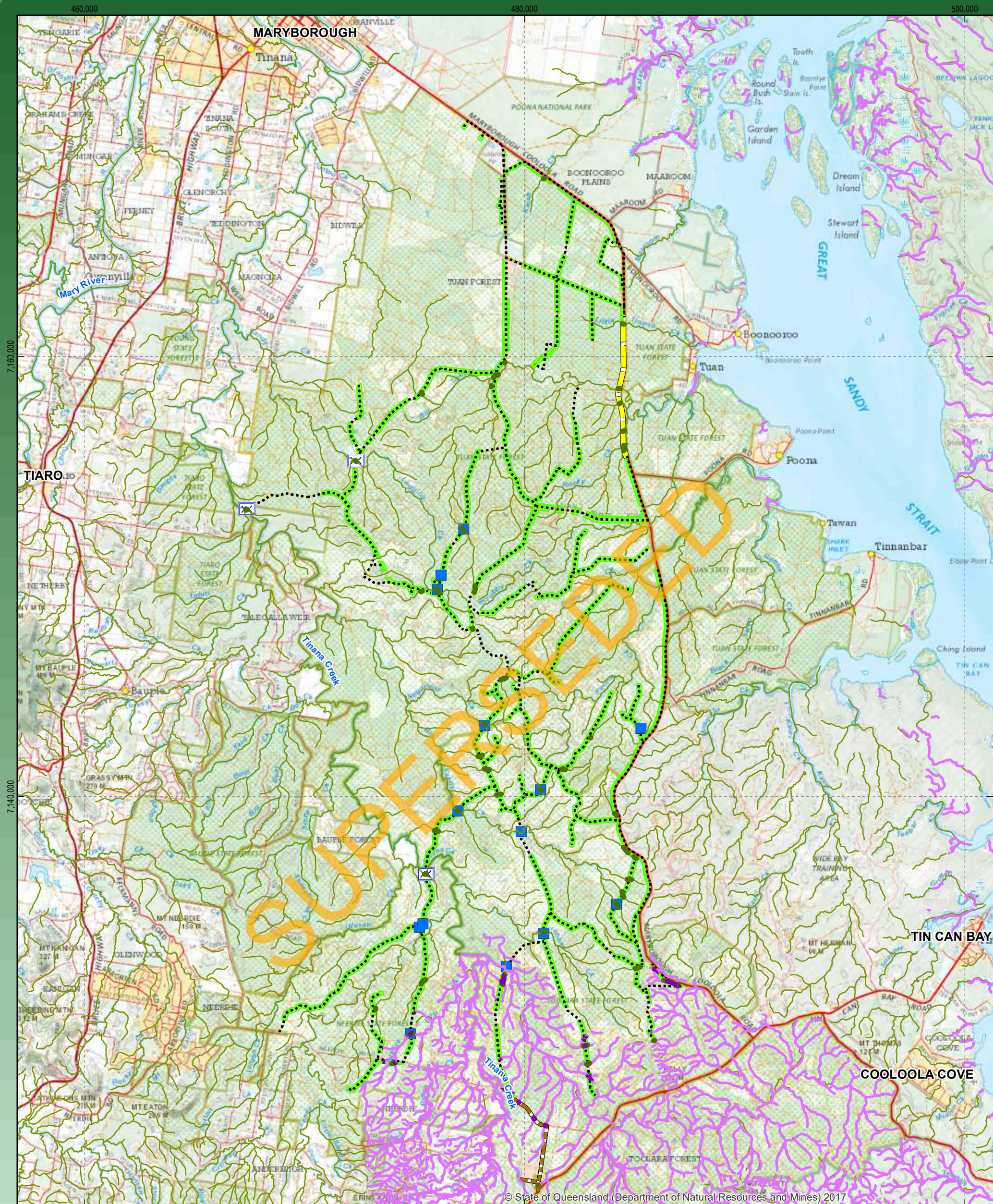
Preliminary Ecological Assessment for
Proposed Wind Farm
CLEANSIGHT

VM wetland and MSES regulated
vegetation 100m from wetland

Figure 5

Z:\GIS\SUN17_0063\GIS\Maps\Working (Optional)\report\3\SUN17_0063_05_VM_WETLAND_v3.mxd

Data source: DNRM: Local Government Boundaries QLD (May 2017), Rail Network QLD (Feb 2014), Baseline Roads and Tracks QLD (Mar 2017), Place name gazetteer (Mar 2015), Watercourse Identification Map - watercourse (August 2017), VM wetland v2.43 (5 July 2017), DEHP: MSES - regulated vegetation 100m from wetland (30 June 2017) Image: Qtopo WebM © State of Queensland (DNRM, DEHP)



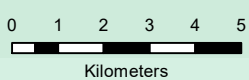
© State of Queensland (Department of Natural Resources and Mines) 2017

Legend

- Potential Culvert
- Bridge Upgrade
- All routes (heavy vehicle routes)
- Additional vehicle route or potential powerline (to Laminex Factory)
- Additional vehicle route or potential powerline (Maryborough Cooloola Rd)
- Corridors
- MSES - High ecological value waters watercourse
- MSES - Regulated vegetation intersecting a watercourse
- Potential trigger - MSES - HEV watercourse
- Potential Trigger - MSES regulated vegetation intersecting a watercourse

Premise
ENVIRONMENT

SUNSHINE COAST
8 Grebe Street
Peregian Beach, QLD, 4566
t (07) 5448 3288
premise.com.au



1:165,000 at A3

Map Projection: Transverse Mercator
Horizontal Datum: GDA 1994
Grid: GDA 1994 MGA Zone 56

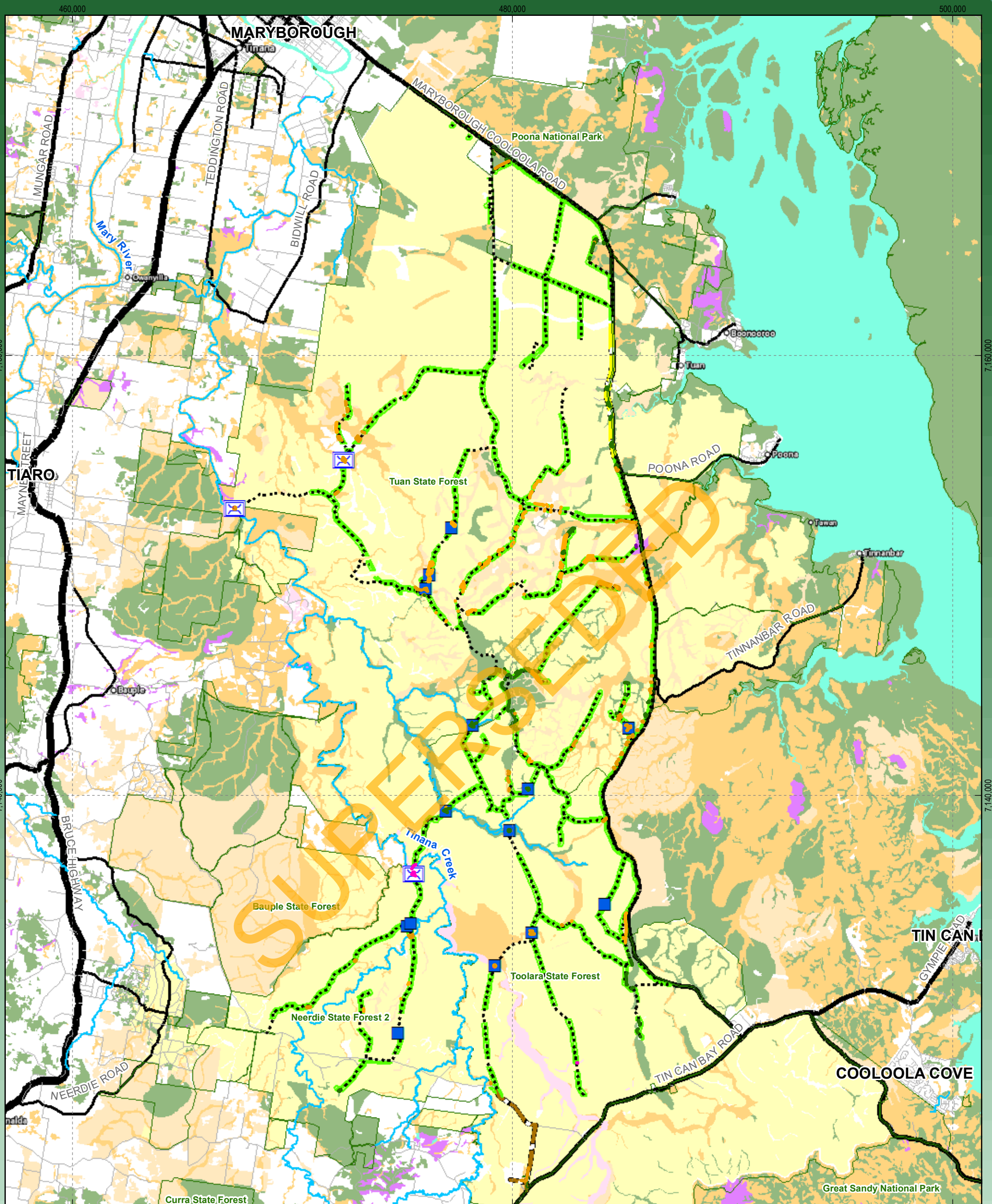
**Preliminary Ecological Assessment for
Proposed Wind Farm
CLEANSIGHT**

**MSES - Regulated vegetation
(intersecting a watercourse)
and High Ecological value Waters**

Figure 6

Z:\GIS\SUN17_0063\GIS\Maps\Working (Optional)\report\3\SUN17_0063_06_MSES_DRAINAGE_v3.mxd

Data source: DNRM: Local Government Boundaries QLD (May 2017), Rail Network QLD (Feb 2014), Baseline Roads and Tracks QLD (Mar 2017), Place name gazetteer (Mar 2015), Water Identification Map - watercourse (Aug 2017)
DEHP: MSES - HEV Waterways & Regulated veg intersecting a watercourse (30 June 2017), Imagery QTOPO Web© State of Queensland (DNRM, DEHP)



Legend

Potential Culvert	Additional vehicle route or potential powerline (to Laminex Factory)	Regional Ecosystems (BD Status)	Of Concern (Sub-dom)	Potential trigger - Regional Ecosystem
Bridge Upgrade	Additional vehicle route or potential powerline (Maryborough Coolooloa Rd)	Endangered (Dom)	Not of Concern	Endangered (Dom)
Watercourse Identification Map	Road Network	Endangered (Sub-dom)	Plantation	Endangered (Sub-dom)
All routes (heavy vehicle routes)	Highway	Of Concern (Dom)	Water	Of Concern (Dom)
Protected areas of Qld	Secondary Road			Of Concern (Sub-dom)
Corridors	Local Connector Road			Not of Concern
	Street/Local			

Premise ENVIRONMENT
 SUNSHINE COAST
 8 Grebe Street
 Peregian Beach, QLD, 4566
 t (07) 5448 3288
 premise.com.au

0 1 2 3 4 5
 Kilometers
 1:165,000 at A3
 Map Projection: Transverse Mercator
 Horizontal Datum: GDA 1994
 Grid: GDA 1994 MGA Zone 56

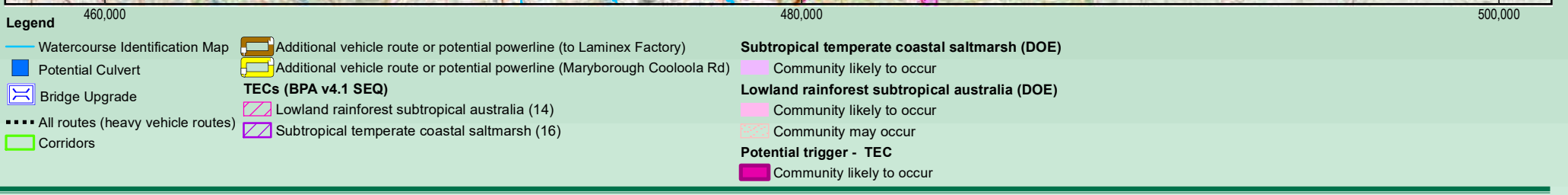
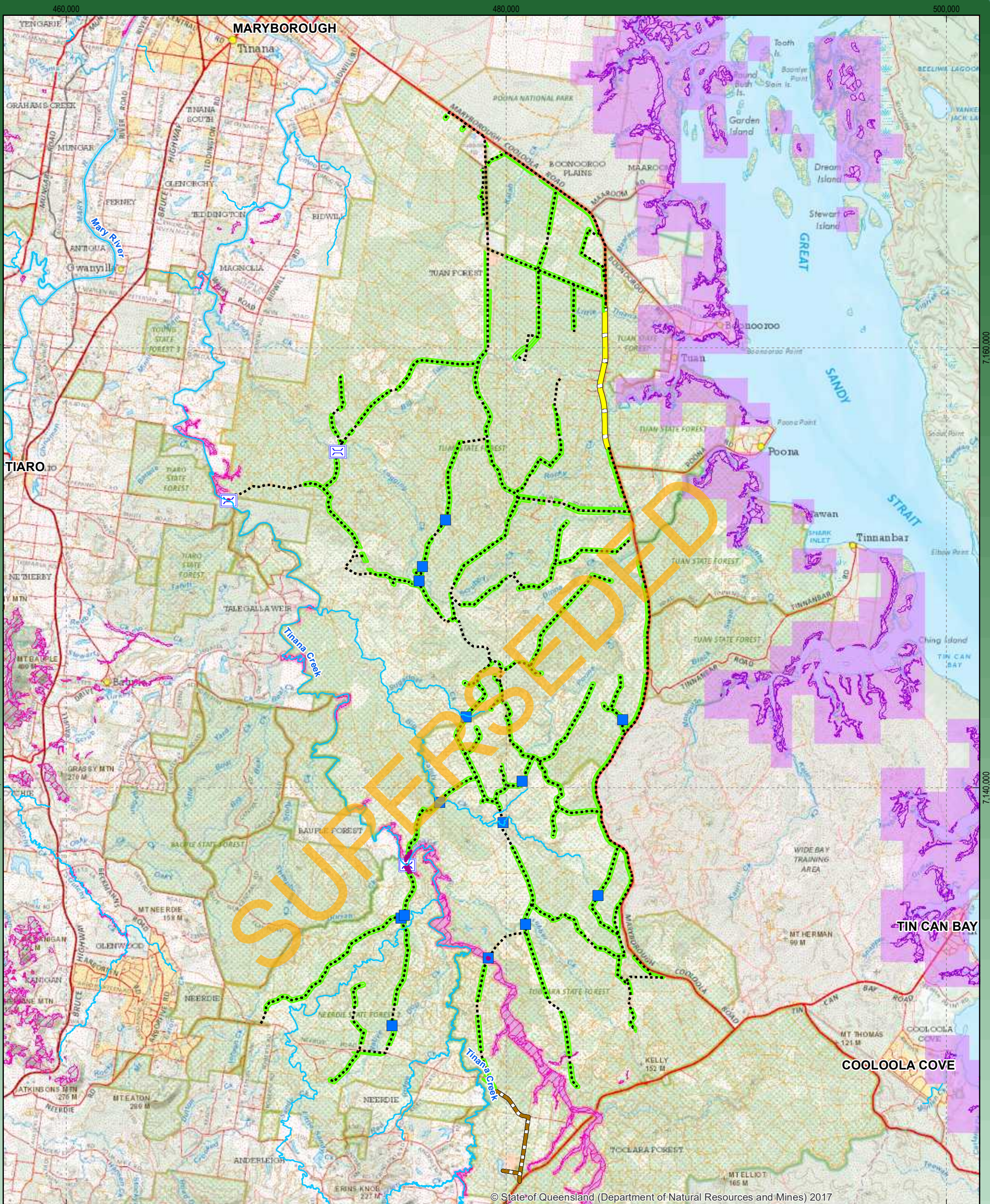
Preliminary Ecological Assessment for
 Proposed Wind Farm
CLEANSIGHT

Regional Ecosystems V10
 (Biodiversity Status)

Figure 7

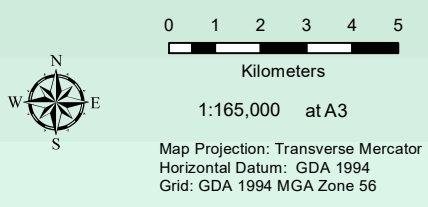
10 Aug 2017 Z:\GIS\SUN17_0063\GIS\Maps\Working (Optional)\report\3\SUN17_0063_07_RE_BDSTATUS_v3.mxd

Data source: DNRM: Local Government Boundaries QLD (May 2017), Rail Network QLD (Feb 2014), Baseline Roads and Tracks QLD (Mar 2017), Place name gazetteer (Mar 2015), Watercourse Identification Map - watercourse (Aug 2017)
 DNPSR: Protected areas Qld (22 May 2017) DSITI: Biodiversity status of 2015 remnant regional ecosystems (Dec 2016) © State of Queensland (DNRM, DNPSR, DSITI)



Premise
ENVIRONMENT

SUNSHINE COAST
8 Grebe Street
Peregian Beach, QLD, 4566
t (07) 5448 3288
premise.com.au



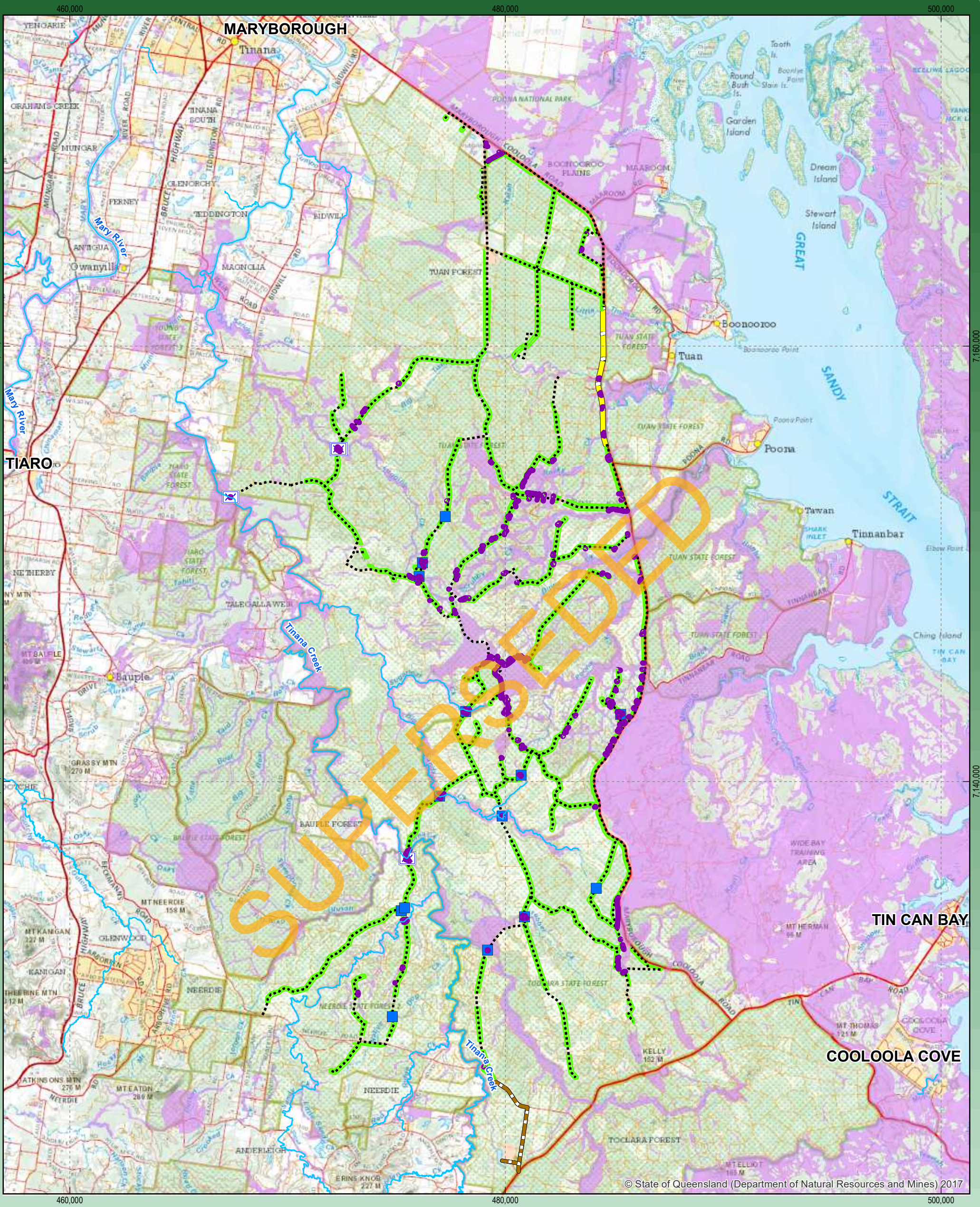
Preliminary Ecological Assessment for
Proposed Wind Farm
CLEANSIGHT

Threatened Ecological
Communities

Figure 8

Z:\GIS\SUN17_0063\GIS\Maps\Working (Optional)\report\3\SUN17_0063_08_TEC_v3.mxd

Data source: DNRM: Local Government Boundaries QLD (May 2017), Rail Network QLD (Feb 2014), Baseline Roads and Tracks QLD (Mar 2017), Place name gazetteer (Mar 2015), Watercourse Identification Map - watercourse (Aug 2017). Image: QTopo WebM
DEHP: TEC extracted from BPA (SEQ v4.1, Sept 2016) Criteria NTEC. DOE: TEC - ECnes Public (Nov 2016) © State of Queensland (DNRM, DEHP)

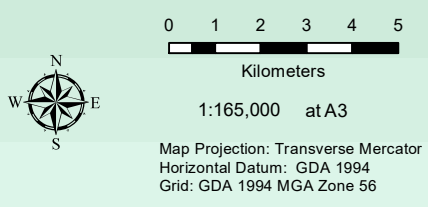


© State of Queensland (Department of Natural Resources and Mines) 2017

- Legend**
- Potential Culvert
 - ⊠ Bridge Upgrade
 - Watercourse Identification Map
 - - - All routes (heavy vehicle routes)
 - Corridors
 - Additional vehicle route or potential powerline (to Laminex Factory)
 - Additional vehicle route or potential powerline (Maryborough Cooloola Rd)
 - MSES - Regulated vegetation (essential_habitat)
 - Potential trigger - MSES Essential Habitat

Premise
ENVIRONMENT

SUNSHINE COAST
8 Grebe Street
Peregian Beach, QLD, 4566
t (07) 5448 3288
premise.com.au



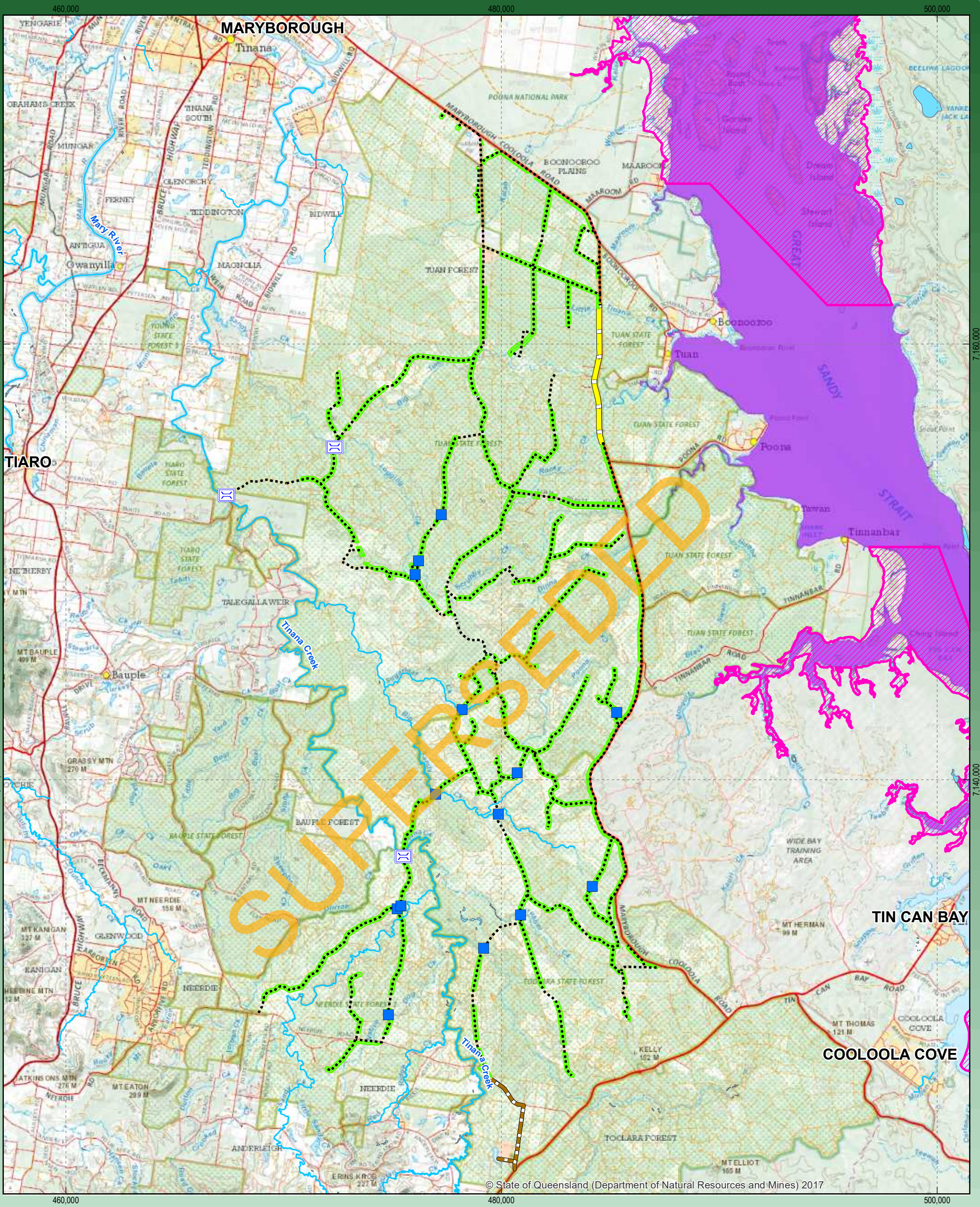
Preliminary Ecological Assessment for
Proposed Wind Farm
CLEANSIGHT

**MSES - Regulated Vegetation
Essential Habitat**

Figure 9

Z:\GIS\SUN17_0063\GIS\Maps\Working (Optional)\report\3\SUN17_0063_09_ESSENTIAL_HABITAT_v3.mxd

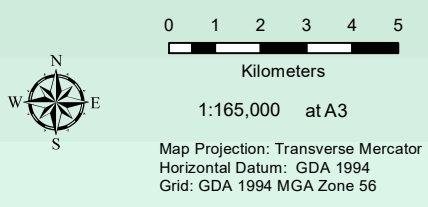
Data source: DNR: Local Government Boundaries QLD (May 2017), Rail Network QLD (Feb 2014), Baseline Roads and Tracks QLD (Mar 2017), Place name gazetteer (Mar 2015), Water Identification Map - watercourse (Aug 2017), Imagery QTOPO WebM
DEHP: MSES - Regulated vegetation Essential habitat (30 June 2017) © State of Queensland (DNR, DEHP)



- Legend**
- Potential Culvert
 - ⊠ Bridge Upgrade
 - Watercourse Identification Map
 - - - All routes (heavy vehicle routes)
 - Corridors
 - Additional vehicle route or potential powerline (to Laminex Factory)
 - Additional vehicle route or potential powerline (Maryborough Cooloola Rd)
 - MSES - fish habitat area
 - Dugong Protection Areas

Premise
ENVIRONMENT

SUNSHINE COAST
8 Grebe Street
Peregian Beach, QLD, 4566
t (07) 5448 3288
premise.com.au

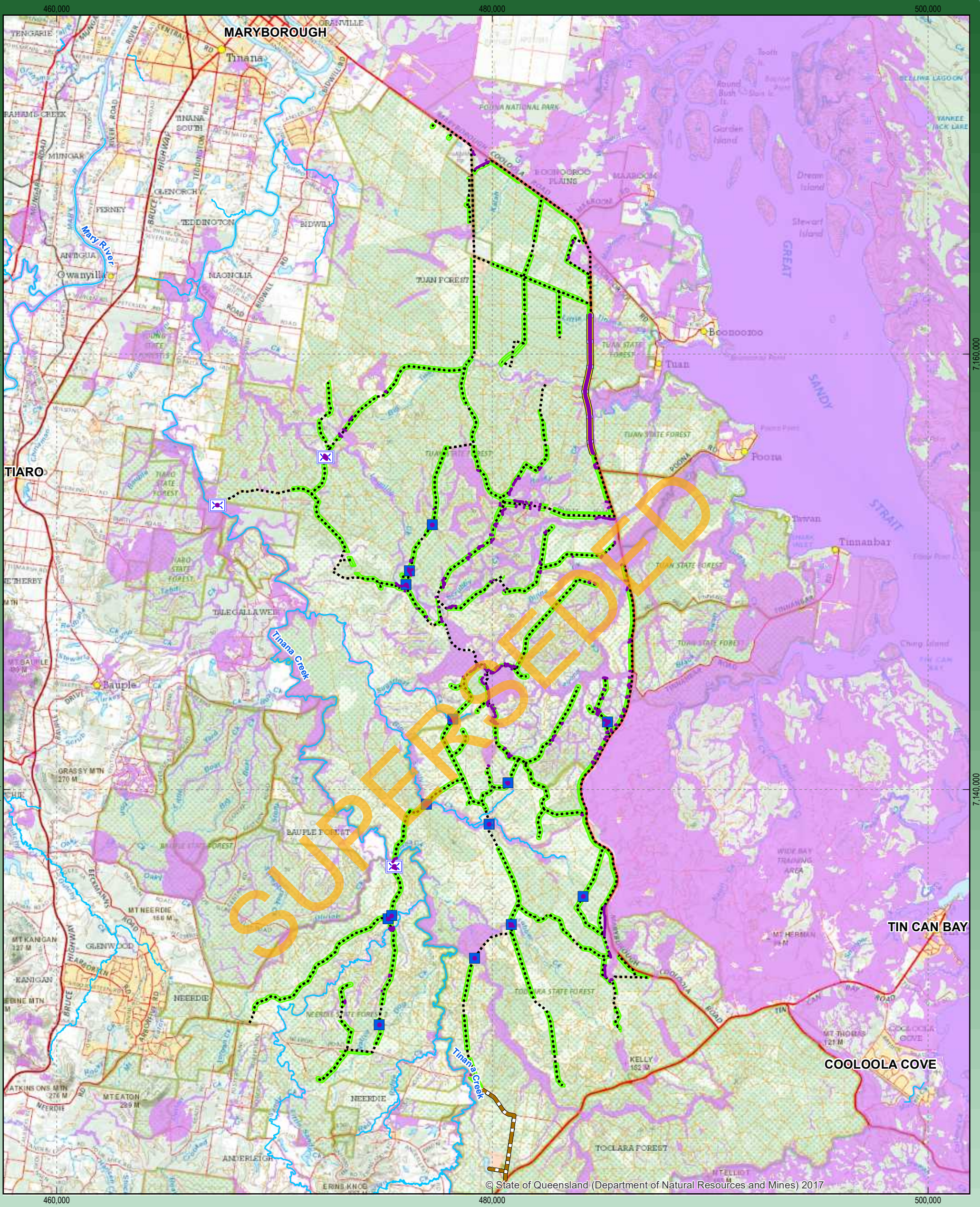


Preliminary Ecological Assessment for
Proposed Wind Farm
CLEANSIGHT

**Dugong Protection Areas
and Fish Habitat Areas**

Figure 10

Data source: DNRM: Local Government Boundaries QLD (May 2017), Rail Network QLD (Feb 2014), Baseline Roads and Tracks QLD (Mar 2017), Place name gazetteer (Mar 2015), Water Identification Map - watercourse (Aug 2017), Imagery QTOPO WebM DAF: Dugong Protection Areas (March 2013) DEHP: MSES - Fish Habitat Area (28 June 2017) © State of Queensland (DNRM, DEHP)



© State of Queensland (Department of Natural Resources and Mines) 2017

- Legend**
- Potential Culvert
 - X Bridge Upgrade
 - Watercourse Identification Map
 - - - All routes (heavy vehicle routes)
 - Corridors
 - Additional vehicle route or potential powerline (to Laminex Factory)
 - Additional vehicle route or potential powerline (Maryborough Coolooloa Rd)
 - MSES - Wildlife habitat
 - Potential trigger - MSES - wildlife

Premise
ENVIRONMENT

SUNSHINE COAST
8 Grebe Street
Peregian Beach, QLD, 4566
t (07) 5448 3288
premise.com.au

0 1 2 3 4 5
Kilometers

1:165,000 at A3

Map Projection: Transverse Mercator
Horizontal Datum: GDA 1994
Grid: GDA 1994 MGA Zone 56

Preliminary Ecological Assessment for
Proposed Wind Farm
CLEANSIGHT

MSES - Wildlife Habitat, Threatened
and Special Least Concern animal

Figure 11

Z:\GIS\SUN17_0063\GIS\Maps\Working (Optional)\report\3\SUN17_0063_11_MSES_WILDLIFE_v3.mxd

Data source: DNRM: Local Government Boundaries QLD (May 2017), Rail Network QLD (Feb 2014), Baseline Roads and Tracks QLD (Mar 2017), Place name gazetteer (Mar 2015), Water Identification Map - watercourse (Aug 2017), Imagery QTOPO WebM
DEHP: MSES - Wildlife (30 June 2017) © State of Queensland (DNRM, DEHP)