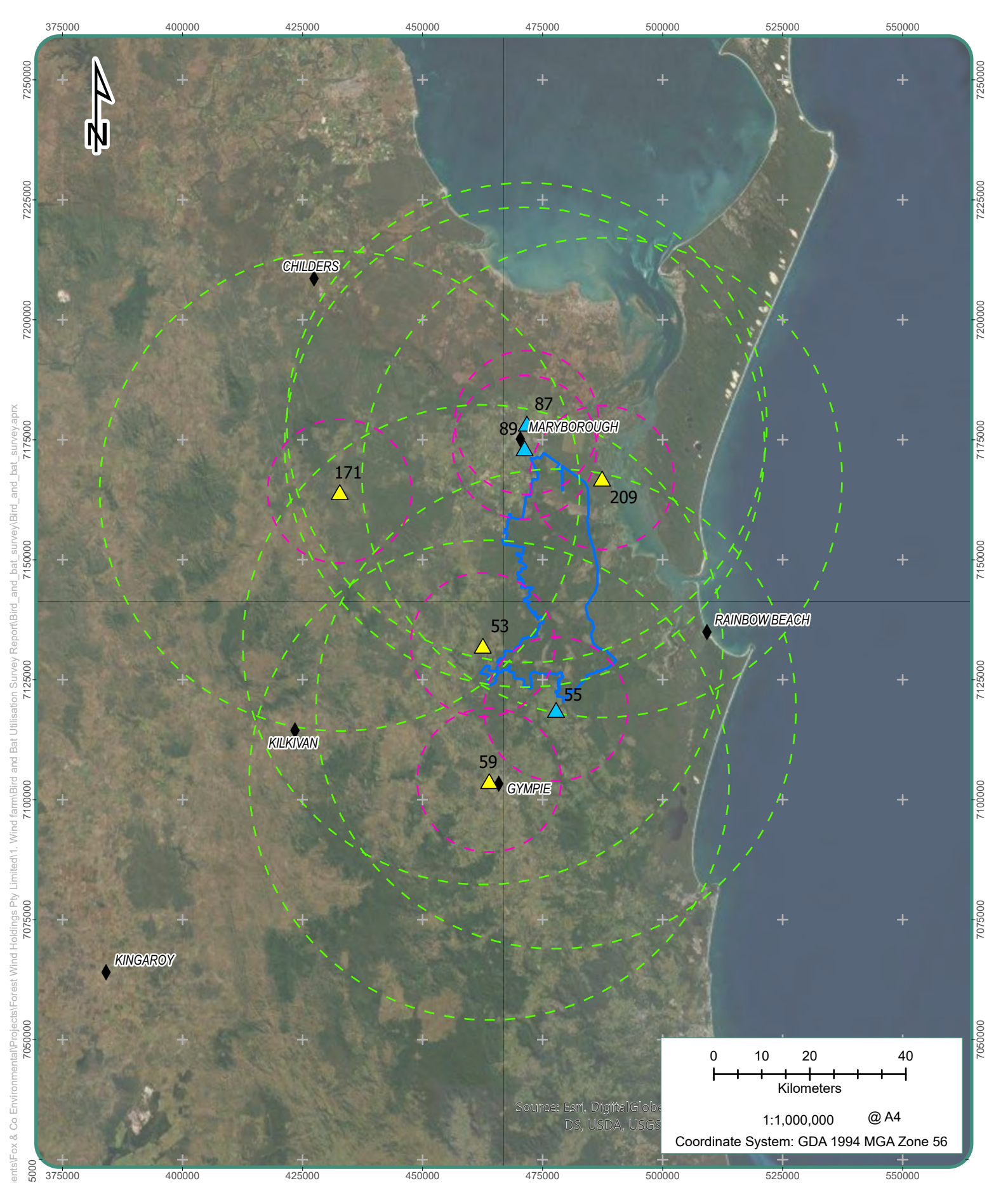


APPENDIX A

Figures

- Figure 7 – Flying-fox camps
- Figure 8 – Regional Ecosystems
- Figure 9 – Essential Habitat
- Figure 10 – Protected Plant Survey Trigger Areas
- Figure 11 – Conservation Areas
- Figure 12 – RAMSAR Wetlands
- Figure 13 – MSES Wetlands
- Figure 14 – Vegetation Management Wetlands
- Figure 15 – MSES Drainage
- Figure 16 – Waterway Identification
- Figure 17 – Conservation Significant Species Identified on Project Area (PLA)



TITLE:
**Grey headed flying-fox
 potential foraging distances**

- LEGEND**
- ▲ Grey headed flying-fox camp
 - Project Area (PLA)
 - ▲ Nationally important flying-fox camp
 - - - Flying-fox camp 15km buffer
 - ◆ Populated places
 - - - Flying fox camp 50km buffer

MAP NO: Figure 7

PROJECT: Forest Wind Holdings Pty Ltd -
 Bird & Bat Utilisation Survey



Date: 10/02/2020

Data Source:
 © State of Queensland (Department of Natural Resources, Mines and Energy) 2019.

Document Path: C:\Users\greenvale\Documents\Fox & Co Environmental\Projects\Forest Wind Holdings Pty Limited\Report Figures\FWH_report_figures\FWH_report_figures\FWH_report_figures - EPBC version.aprx

7175000

7150000

7125000

7100000

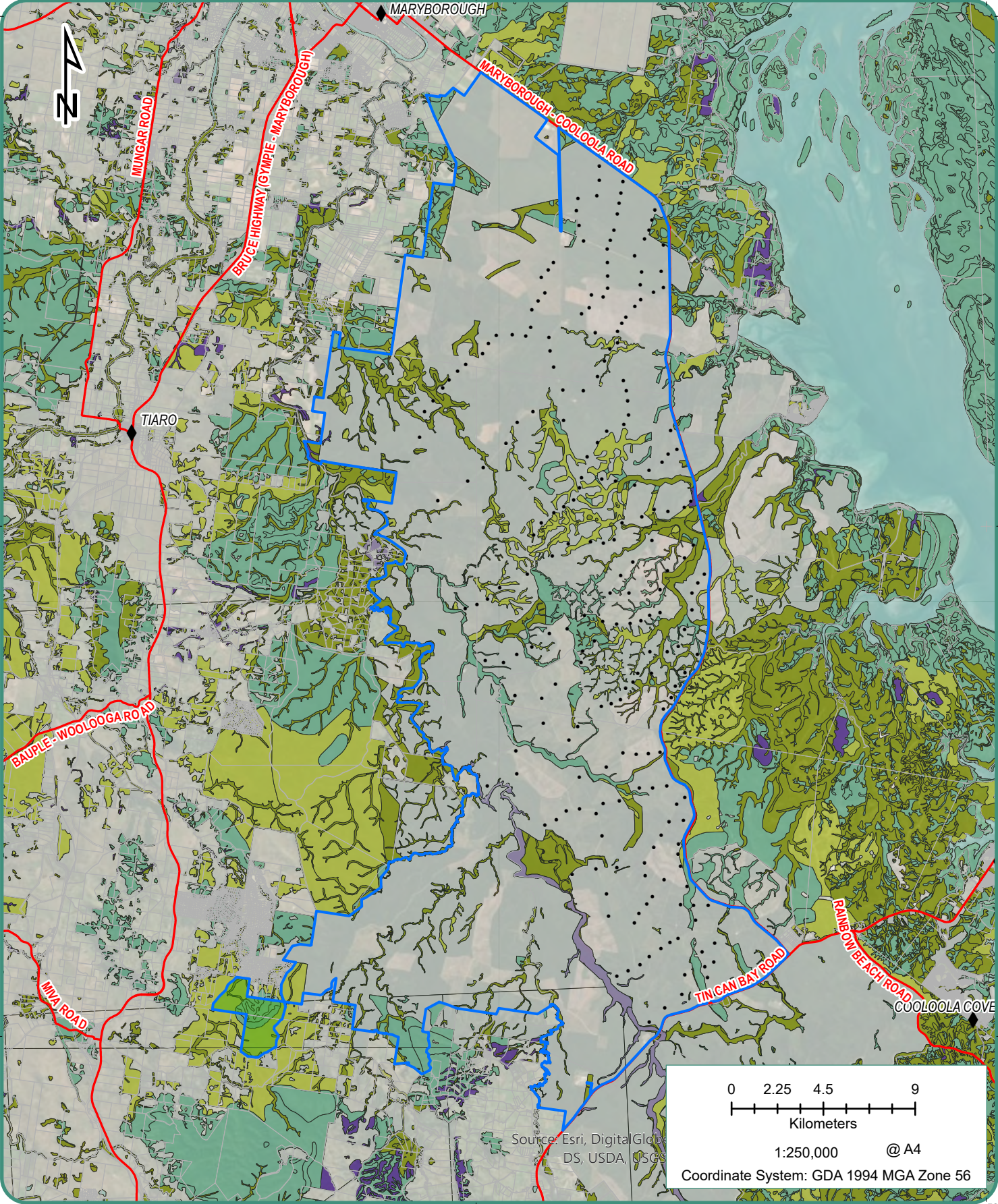
475000

500000

7150000

7125000

500000



Source: Esri, Digital Globe, DeLorme, GeoEye, (Geo), USDA, USGS

0 2.25 4.5 9
 Kilometers
 1:250,000 @ A4
 Coordinate System: GDA 1994 MGA Zone 56

TITLE:
Regional Ecosystems - Biodiversity status

MAP NO: Figure 8

PROJECT: Forest Wind Holdings Pty Ltd

LEGEND

◆	Populated places	■	Endangered - Dominant
●	FWH nominal turbine locations	■	Endangered - Sub-dominant
—	State controlled roads	■	Of Concern - Dominant
▭	Project Area (PLA)	■	Of Concern - Sub-dominant
▭	Property boundaries	■	No concern at present
		■	Non-remnant, regrowth, disturb
		■	Water



Date: 10/02/2020

Data Source:
 © State of Queensland (Department of Natural Resources, Mines and Energy) 2019.
 © State of Queensland (Department of Environment and Science) 2018