

TITLE:

RAMSAR wetlands

MAP NO: Figure 12

PROJECT: Forest Wind Holdings Pty Ltd

LEGEND

- ◆ Populated places
- FWH nominal turbine locations
- State controlled roads
- ▭ Property boundaries
- RAMSAR wetlands
- Native state forest
- ▭ Project Area (PLA)

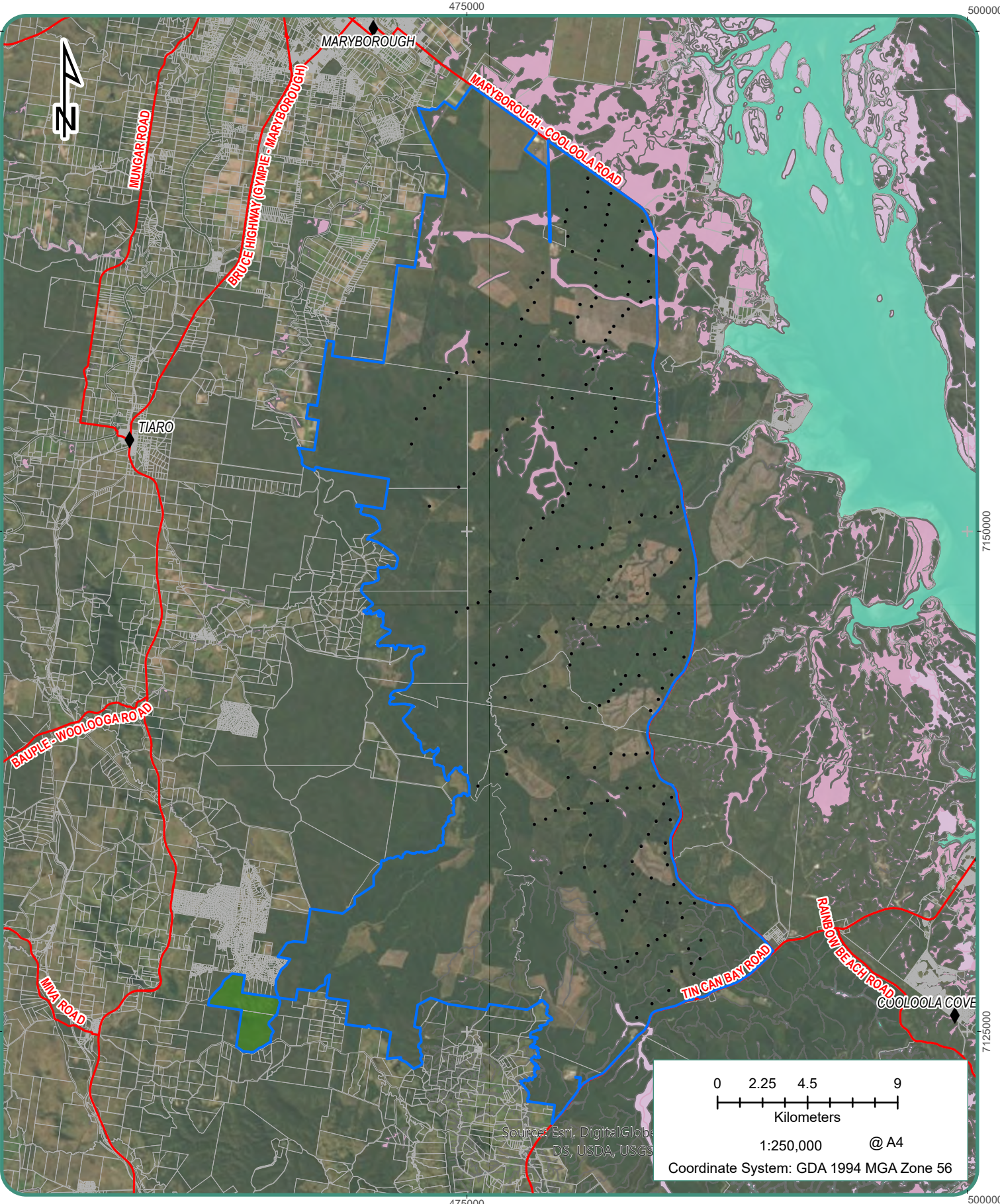


Date: 10/02/2020

Data Source:
 © State of Queensland (Department of Natural Resources, Mines and Energy) 2019.
 RAMSAR wetlands, © Commonwealth of Australia (Department of the Environment and Energy) 2019

Document Path: C:\Users\greenvale\Documents\Fox & Co Environmental\Projects\Forest Wind Holdings Pty Limited\Report Figures\FWH_report_figures\FWH_report_figures - EPBC version.aprx

Document Path: C:\Users\greenvale\Documents\Fox & Co Environmental\Projects\Forest Wind Holdings Pty Limited\Report Figures\FWH_report_figures\FWH_report_figures - EPBC version.aprx



TITLE:
MSES - HEV wetlands and HES wetlands

MAP NO: Figure 13

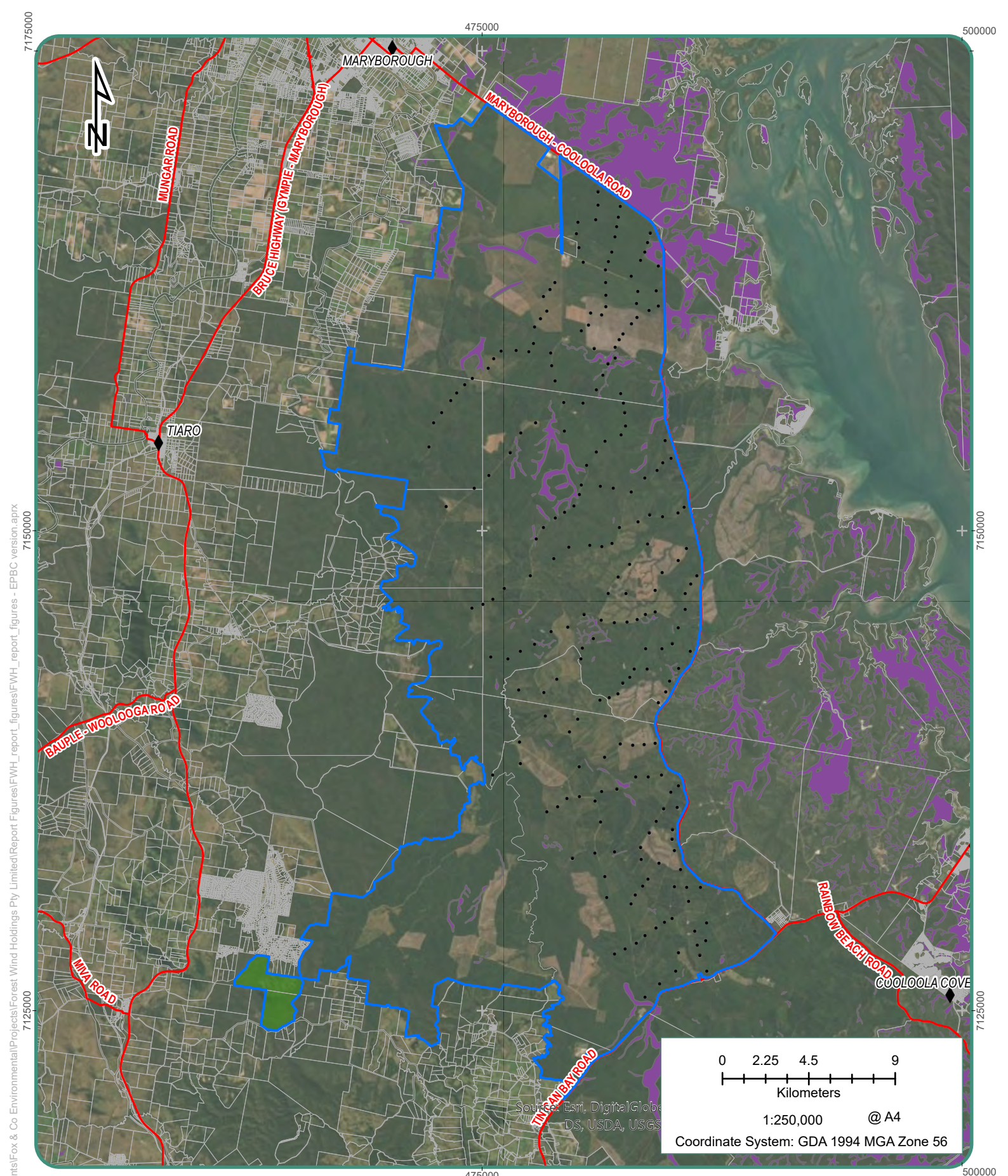
PROJECT: Forest Wind Holdings Pty Ltd

- LEGEND**
- ◆ Populated places
 - FWH nominated turbine locations
 - State controlled roads
 - ▭ Property boundaries
 - ▭ MSES HES wetlands
 - ▭ MSES HEV wetlands
 - ▭ Native state forest
 - ▭ Project Area (PLA)



Date: 10/02/2020

© State of Queensland (Department of Environment and Science) 2019 Data Source: HEV & HES wetlands © State of Queensland (Department of Natural Resources, Mines and Energy) 2019.




TITLE:
Vegetation Management Wetlands Map

MAP NO: Figure 14

PROJECT: Forest Wind Holdings Pty Ltd

LEGEND

◆ Populated places	▭ Property boundaries
• FWH nominal turbine locations	■ Vegetation management wetlands map
— State controlled roads	■ Native state forest
▭ Project Area (PLA)	



Date: 10/02/2020

Data Source:
 © State of Queensland (Department of Natural Resources, Mines and Energy) 2019.
 Vegetation management wetlands map, downloaded 03/08/2019

Document Path: C:\Users\greenvale\Documents\Fox & Co Environmental\Projects\Forest Wind Holdings Pty Limited\Report Figures\FWH_report_figures\FWH_report_figures - EPBC version.aprx
 7175000
 7150000
 7125000
 7150000