

Ramsar Wetland





Forest Wind

Ramsar Wetland

- The Great Sandy Strait (GSS) Ramsar Site coastal shoreline area is approximately 4km from the eastern boundary of the Project Area
 - Poona Creek which is within 1km of the eastern boundary of the Project Area.
- No migratory shorebirds observed in the Project Area
- Stormwater and Erosion and Sediment Control Strategy
- EPBC Act report currently being finalised:
 - Comprehensive assessment against criteria specific to the GSS Ramsar
- Available for public consultation once report is submitted

Development Permit Conditions





Forest Wind

Development Permit – application

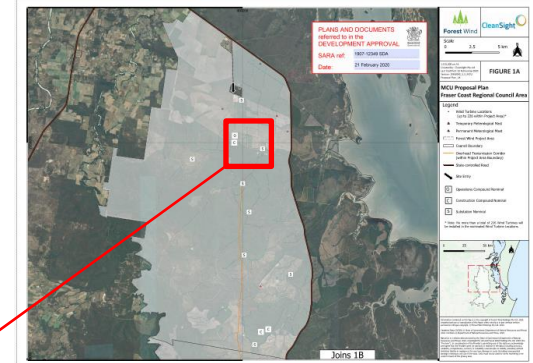
- Application for the Permit including preliminary management plans and technical reports in accordance with Queensland *Planning Act* State Code 23 for Wind Farms and accompanying State Code 23 Planning Guideline (July 2017)
- Management measures during construction and operation have been included in the individual technical reports were relevant
- Preliminary Management Plans include:
 - Bird and Bat Management Plan
 - Vegetation Management Plan
 - Construction Management Plan, includes:
 - Site Management Plan
 - Construction Traffic Management
 - Bushfire Management Plan
 - Construction Environment Management Plan
 - Stormwater and Erosion and Sediment Control Strategy
 - Traffic Management Plan



Forest Wind

Development Permit – conditions

- Provides conditions and timeframes
- Conditions in relation to different aspects of the Project including, noise, traffic, vegetation, birds and bats, television reception, construction management and others
- Condition 1 - development to be carried out in ‘general accordance’ with approved plans
- Up to 226 wind turbines from locations on approved plans
- Micro-siting
 - Within 100m of wind turbine



Condition 6 - Television and radio reception



Forest Wind

- Pre-construction assessment of television and radio reception strength within 5km of any proposed wind turbine
- Post construction assessment of television and radio reception strength within 5km of any proposed wind turbine

- To be undertaken by an independent television and radio monitoring specialist
- Testing locations to be determined by specialist
- Enable average reception strength to be determined

- If there is an unacceptable increase in interference to reception as a result of the wind farm, as determined by the independent television and radio monitoring specialist, measures to restore the affected reception to pre-construction quality must be undertaken.



Forest Wind

Conditions 7 and 8 - Ecology

Condition 7 – Vegetation and Fauna Management Plan

- Prepared by suitably qualified ecologist
- Detail measures to identify and avoid fauna resources and habitats prior to clearing
- Measures to protect and recover fauna during clearing operations
- Qualified wildlife officer during clearing operations, pre-clearing inspections, staging and sequence of clearing and recovery procedures.

Condition 8 – Bird and Bat Management Plan

- Prepared by suitably qualified ecologist
- Identification of 'at risk' bird and bat groups, incorporate baseline data, including additional pre-operational surveys
- Identification of threshold (trigger) levels for species
- Mitigation strategies and monitoring
- A decision-making framework, including the trigger for operational shut-down

Condition 11 – Construction Environmental Management



Forest Wind

- Prepared by suitably qualified ecologist
- Management measures:
 - construction noise and vibration
 - waste
 - weed and pests
- Stormwater management
- Erosion and sediment control plan



Forest Wind

Conditions 12,19, 21– Traffic

- Prior to significant construction commencing, prepare a Traffic Impact Assessment:
 - prepared by certified RPEQ
 - in general accordance with Department of Transport and Main Roads' *Guide to Traffic Impact Assessment 2017*
 - in consultation with Fraser Coast and Gympie Regional Councils
 - identifies potential construction and operational traffic impacts
 - strategies to mitigate impacts
 - interaction with third party land is resolved
 - haul vehicle configuration can be achieved
- Construct any upgrades and other required mitigation measure as required
- Provide RPEQ certification to the Department
- Pavement Impact Assessment

Condition 21 – Construction Management Plan

- Prepared by certified RPEQ
- Minimal disruption to State-controlled Road network
- Construction undertaken in accordance with the Plan

Conditions 13 -16 – Noise



Forest Wind

- **Condition 13 - Noise Impact Assessment**
 - prepared by suitably qualified acoustic consultant
 - in accordance with State Code 23
 - final layout plan
- **Condition 14 - Noise Monitoring Plan**
 - prepared by suitably qualified acoustic consultant
 - in accordance with State Code 23
 - operational noise monitoring - three and nine months following commencement of wind farm operating
- **Condition 15 - Noise Monitoring Report**
 - outline results of Noise Monitoring Plan
- **Condition 16 - Operational Strategy**
 - any necessary operating measures / regime or wind sector management measures required to ensure noise emissions achieve criteria at existing noise affected sensitive and uses on host and non-host lots
 - Non-host lots – night time 35dBA, day time 37dBA or background by more than 5dBA (whichever is the greater)

Condition 18. Complaint Investigation and Response Plan (CIRP)

The CIRP must include:

- (i) a toll-free telephone number and email for complaints and queries
- (ii) how contact details will be communicated to the public
- (iii) a process of investigation to resolve complaints
- (iv) a requirement that all complaints will be recorded in an incident register that is to include the following details:
 - the complainant's name and address
 - a unique reference number for each complaint that is to be communicated to the complainant
 - any applicable turbine or monitoring mast reference number
 - the complainant's concerns including date, time, prevailing conditions and description of the complaint
 - the process of investigation undertaken to resolve the complaint
 - whether or not the complaint has been resolved to the satisfaction of the complainant.

(b) Provide the CIRP required by part (a) of this condition to the Department of State Development, Manufacturing, Infrastructure and Planning.

(c) Undertake complaints investigation and response in accordance with the complaint investigation and response plan required by part (a) of this condition.

(d) Submit a report summarising complaints, investigation and responses to the Department of State Development, Manufacturing, Infrastructure and Planning.

Transmission Line

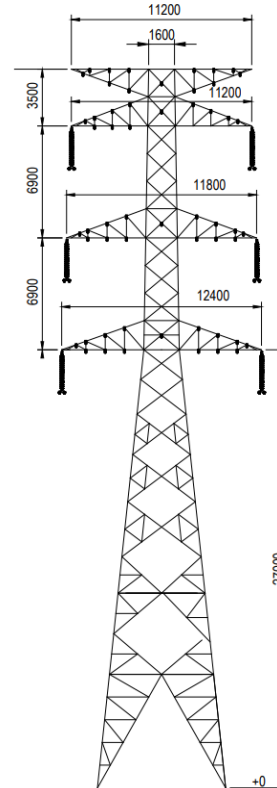




Forest Wind

Design details

- 275 kV high voltage power line
- 60m wide easement
- Free standing lattice towers
 - Approximately 450m apart
- Design will be undertaken in consultation with Powerlink and specialist consultants



Double Circuit 275kV Lattice Tower





Forest Wind

Design approach

- Identify options for corridors in which to locate the easement
 - Range of criteria considered in selecting criteria including the following:
 - topography
 - environment
 - existing and proposed land uses
 - proximity to communities
 - Access
- Select corridor in consultation with Powerlink
- Develop concept alignment
- Contact landowners and refine alignment as required
- Ongoing liaison with Powerlink
- Community consultation including relevant environment groups